



NATURAL
Animal
CENTRE

knowledge

action

compassion

The Natural Animal Centre
Penhill
Trawsmawr
Carmarthen
SA33 6ND

01986 892196

www.naturalanimalcentre.com
info@naturalanimalcentre.com

canine behaviour qualification

stage 1 - accelerated learning



**For more information on the NAC
animal behaviour courses go to:**

<http://www.naturalanimalcentre.com/animal-behaviour.php>

The Natural Animal Centre (NAC) was founded by Ross and Heather Simpson in 1997, the centre has grown from its original base in Sussex, England to two beautiful centres in Wales as well as 2 game reserves abroad. In 2010 Jonathan Mitchel joined the NAC partnership to extend the locations where the behaviour qualifications are taught to include Essex. Having worked for the NAC for 10 years Jonathan has taken the "NAC way of life" and established a base in south east England.



Our main centre in Wales (NAC1) is where many of the courses are taught and is home to the Natural Animal Veterinary Centre, with accomodation and longer term rehabilitation facilities provided at NAC 2 - a 10 minute drive away.



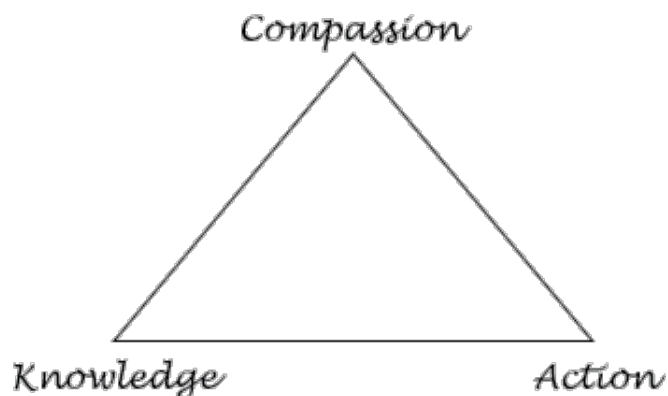
The NAC has expanded internationally and we have 2 reserves in southern africa and we are currently working on one in the Himalayas, India for the future. For more information on these reserves and the work of the Wild Equid Protection Trust visit www.W-E-P-T.org

Compassion through science and ethical action.....

Our mission statement:

positively influencing the wellbeing of animals worldwide

Compassionate understanding of animals is always our main goal and we help people develop this awareness through gaining a sound base of scientific knowledge which creates oppurtunities for positive choices to be made regarding actions to be taken with their animals



Here at the NAC we act as a role model by showing compassionate alternatives available in management such as our Barn Management System for horses and pigs and the manmade rabbit warren.

canine behaviour qualification

stage 1 - accelerated learning

Preamble

The science of dog behaviour is not new and over the last couple of decades in particular, some of this research has filtered down to the dog owner. Books on dog training and behaviour are plentiful but often, the essence of the science is so diluted that some of the original, crucial elements are simply ignored. A type of convenient short-hand for dog behaviour has developed amongst many dog trainers and owners and this approach is now so common that it is in danger of becoming set in stone.

Following several years of professional canine behavioural practice at the Natural Animal Centre, it has become increasingly clear to us that coercion and inadequately understood dog behaviour has no place in the training and behaviour modification of dogs. Yet although the use of positive reinforcement in modifying the behaviour of young and readily trainable dogs is becoming more widespread, typically, the more unacceptable the behaviour of the dog, the more often modification tends towards the use of aversive therapy or force.

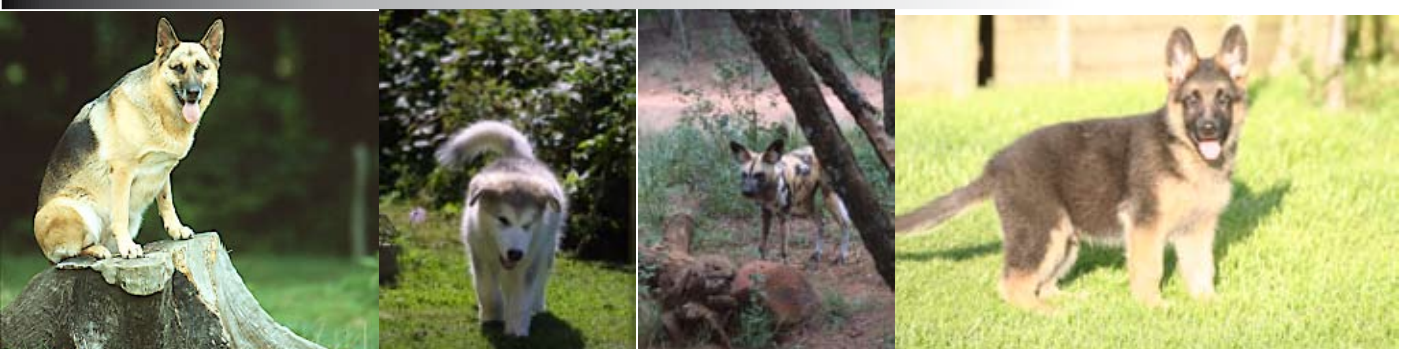
The Natural Animal Centre wishes to improve the situation by educating prospective Canine Behaviourists so that they offer clients a service based on both scientifically and practically proven principles.

Currently it is possible to gain degrees in animal behavioural science at a number of universities in this country but none of them offer practical hands-on behavioural study of dogs and also, many do not offer positions to students whose background is not of an academic nature.

The Natural Animal Centre aims to bridge the gap between the academic institutions and the dog trainers by offering a quality, scientifically and practically based qualification for those seeking to help dogs from a behavioural perspective.

Objectives of the Canine Behaviour Qualification (CBQ)

- *to give the dog-owning public and canine welfare organizations a choice in hiring qualified canine behaviourists with a recognizable, trustworthy qualification*
- *provide veterinary surgeons with the choice and security of referring canine behavioural problems to appropriately qualified canine behavioural professionals*
- *provide canine behaviourists with a credible, valuable, scientifically-based accreditation which would give them the knowledge and practical experience to offer professional behavioural advice to a paying client*
- *provide a structure for on-going Continuing Professional Development (CPD) to maintain the integrity of the CBQ in the market*



canine behaviour qualification

stage 1 - accelerated learning

Format of the CBQ

The accelerated learning option allows you to combine modules to reduce your visits to the NAC and complete the CBQ in a reduced time. For the duration of the accelerated learning course we run 4 modules back to back with one day off in the middle so you will come and do module 1 - 4 in a visit and module 5 - 8 in another visit. Module 9 including assessments are then completed separately.

Below is a list of the main aims of each of the modules. Additional subject matter will also be taught and each of the modules contains ample opportunity for students to explore their new knowledge in the form of practicals (in some cases with real dogs) and case studies.

Module 1 Aim: Understanding normal behaviours in dogs (Three Days)

- a zoological and behavioural approach to the evolution of the dog, including an introduction to other carnivores (hyaenas, dingoes, wolves, wild dogs & jackals);
- the canine ethogram
- communication systems in dogs
- the theory of neotenisation
- dominance and submission in dogs

Module 2 Aim: Understanding instrumental learning in dogs (Three Days)

- coercion and the human psyche
- introduction to instrumental learning including reinforcement and punishment
- the theory of the Selfish Gene and its application to the dog

Module 3 Aim: Understanding classical conditioning in dogs (Three Days)

- theory of attachment
- human attitudes to dogs including anthropomorphism
- classical conditioning and other types of learning in dogs

Module 4 Aim: Introduction to physiology of dog behaviour (Three Days)

- physiology of behaviour, the endocrine system and the nervous system
- theory of sleep and sleep/wake cycles in dogs
- sexual reproduction & the physiological affects of castration and spaying

Module 5 Aim: Introduction to canine welfare (Three Days)

- introduction to needs and stress (behavioural and physiological indicators)
- evaluating dominance reduction programmes
- understanding conditioned suppression

caninebehaviourqualification

stage 1 - accelerated learning

Module 6 Aim: Introduction to fear and abnormal behaviours in dogs(Three Days)

- fears, anxieties and phobias in dogs (including epidemiology and aetiology)
- behaviour of dogs in kennelled environments (eg rescue centres)
- stereotypical behaviours and other abnormal behaviours

Module 7 Aim: Introduction to consulting and professional conduct (Three Days)

- more on fear behaviour in dogs
- advanced fear related cases
- how to structure and run a consultation
- live practice at running a consultation

Module 8 Aim: Modifying aggression in dogs (Three Days)

- modifying aggression in dogs (more advanced cases)
- ethics of working with vets

Module 9a Aim: Formal Assessment (Four Days)

The emphasis in this module is mainly on assessment although the first two days mainly comprises additional teaching. Assessment comprises three parts:

- Formal assessment of consultation with a client
- Written analysis of behaviour presented in the form of a short video
- Written examinations (in 3 parts)

Module 9b Aim: Prepared Case Studies

Students submit answers to four written case studies within three months.

Module 9c Aim: Field Case Study

Students will submit the results of a field case study based on advice given to a real client. The canine behaviour problem needs to be a level of seriousness that a progression towards a successful outcome would require approximately three month's work. It is a requirement that the initial consultation with the client is submitted on video for assessment.

Time limit for Completion of the CBQ

Whilst the Natural Animal Centre seeks to help students spread the expenditure of the cost of the CBQ (See Payment Terms overleaf), there is a time limit of two years in which to complete the CBQ. Most modules will be offered at least once per year so students can plan their study. Typically, a dedicated student could expect to complete the CBQ in approximately 15 months.



caninebehaviourqualification

stage 1 - accelerated learning

Pricing

Attend our accelerated learning option and benefit from a 10% discount compared with our pay module by module option.

Normal price for teaching modules 1 - 8: £2640

Discounted price for Autumn School mods 1 - 8: £2395

Spread the cost of the course and by making 3 payments

Payment 1	£795	Due when you book
Payment 2	£800	Due 5th Dec 2010
Payment 3	£800	Due 5th Jan 2010

Continuing Professional Development (CPD)

Retention of this qualification requires annual renewal that takes the form of attendance of a CPD course at least once per year at the Natural Animal Centre (either in Wales or in Africa) where graduates of the CBQ will be given the latest up-to-date research on canines and other relevant animals. In this way, the Natural Animal Centre will ensure the integrity and quality of the CBQ remains intact. Currently, CPD is offered twice a year in spring and autumn.

Registration and Supervision

Students who graduate with high academic results and who have shown on-going dedication to canine welfare throughout their time of study at the Natural Animal Centre, may be invited to work in the field as an NAC registered equine behaviourist

Registered graduates will benefit from having cases referred to them by the NAC but by offering them supervision during the early stages of their behavioural career, the NAC will ensure a high standard of excellence is offered to prospective clients.

A fee of £100 per annum is required to cover the Supervisor's costs. Initially the Supervisor will be Heather Simpson but in time we expect that CBQ graduates of more advanced CBQ stages (see below) would be interested in becoming supervisors as well.

Advanced Qualifications – the Canine Behaviour Qualification (Stages 2, 3 and 4)

The Natural Animal Centre aims to be the first educational facility offering a professional qualification in canine behaviour with the emphasis being on teaching students how to offer scientifically-based but practical, hands-on solutions for clients with animals that have behavioural problems.

To this end, we offer a serious career path to those wishing to progress their scientific canine behavioural knowledge even further in the form of more advanced study. By building on work undertaken in Stage 1, further stages of the CBQ give students the opportunity to pursue in-depth canine behavioural study over four years, giving graduates a currently unsurpassed professional dog behavioural qualification.

Payment Terms and Required Reading

Taking part in the accelerated learning course allows you to benefit from a discounted price, The NAC offers help in spreading the cost of the course over 3 or 4 payments and the discounted price is dependant on you meeting those payment dates.

The Required Reading list for the course is sent to the student on registration at their first payment. Books are for the account of the student.

The Required Reading list for a module is sent to the student on confirmation of registration. Books are for the account of the student.

Join us for the NAC Spring School 2011 *(to be held at The Rural Business Centre, Writtle College, Essex)*

<i>Mod 1 - 2</i>		<i>15th - 20th February</i>
<i>Mod 3 - 4</i>		<i>22ndth - 27th February</i>
<i>Mod 5 - 6</i>		<i>22nd - 27th March</i>
<i>Mod 7 - 8</i>		<i>29th March - 3rd April</i>
<i>Mod 9</i>		<i>23rd - 26th June</i>

Call & book your place now 01986 892196